



BAI – KAKAJI POLYMERS LIMITED

Let's Grow Together !

Baikakajipolymers.com

ABOUT US



Bai – Kakaji

Bai-Kakaji Polymers Ltd. was formed in 2013. Bai-Kakaji Polymers Ltd. is located at Latur. Maharashtra. We, one of the leading Alaska (water) closures, CSD 1881 Closures & PET Preform manufacturers. In 2013 we started with one preform manufacturing machine now with SACMI, HUSKY & ASB machines our per month production capacity HDPE alaska caps: 250 million PP caps for carbonated soft drinks: 38.5 million, Pet preform used for packaged drinking water and other beverages: 1800 MT. Closures are produced on World class SACMI compression mold machine & PET preforms are produced on World class uniform wall thickness preform with high clarity, dust free, superior quality and near zero rejection. The design is such that while blowing the preform you will get uniform material distribution resulting in superior sturdiness and improved transparency. SACMI machines provide best quality compressed closures which results in nearly zero rejection and leakage. The preforms & Closures are made under stringent quality control conditions. This gives our customers trouble free production with near zero rejections which saves valuable time as well as reduces their production costs. Our fully equipped laboratory ensures that all products meet or exceed international quality standards.

OUR PHILOSOPHY

We Believe that with every deal we do, we get a new partner for growth, hence we say LETS GROW TOGETHER !

VISION

To be a pioneering force in the global polymer industry, delivering innovative and sustainable solutions. We envision becoming the preferred partner for our clients, renowned for excellence in product quality, technological advancements, and a commitment to environmental responsibility

MISSION

To deliver highest standards on quality for our products & contributing to the development of the society.



PET PREFORMS



PREFORMS DETAILS

ALASKA PREFORMS

Neck Diameter 27MM

Sr. No.	Weight (GMS)	Total Length (MM)
1.	8.2gm	67.00mm
2.	8.7 gm	67.00mm
3.	8.9 gm	67.72mm
4.	9.3 gm	65.00mm
5.	9.9 gm	65.00mm
6.	10.8 gm	65.00mm
7.	12.1 gm	83.05mm
8.	12.3 gm	80.00mm
9.	12.5 gm	81.00mm
10.	12.7 gm	83.60mm
11.	13.1 gm	81.00mm
12.	13.4 gm	81.10mm
13.	13.5 gm	79.00mm
14.	14.1 gm	80.00mm
15.	14.2 gm	81.10mm
16.	14.8 gm	80.00mm
17.	15.4 gm	81.10mm
18.	17.9 gm	107.00mm
19.	18.05 gm	107.00mm
20.	18.00 gm	107.40mm
21.	18.6 gm	107.60mm
22.	19.0 gm	105.00mm
23.	19.3 gm	107.60mm
24.	19.5 gm	101.60mm
25.	19.8 gm	105.00mm
26.	20.0 gm	104.40mm
27.	20.5 gm	108.00mm
28.	21.0 gm	100.28mm
29.	23.8 gm	106.00mm
30.	28 gm	129.50mm
31.	29.5 gm	109.00mm
32.	31.9 gm	129.50mm
33.	33.8 gm	129.52mm

PET PREFORMS



PREFORMS DETAILS

26/22 SHORT NECK FOR WATER GME 30.28

Neck Diameter 27MM

Sr. No.	Weight (GMS)	Total Length (MM)
34.	7.0gm	59.50mm
35.	7.1gm	62.40mm
36.	10.2gm	74.20mm
37.	10.6gm	74.20mm
38.	11 gm	78.30mm
39.	11.5gm	78.50mm
40.	11.6gm	74.20mm
41.	14.0gm	87.00mm
42.	15.50gm	102.70mm
43.	16.0gm	103.20mm
44.	16.6gm	103.00mm
45.	17.3gm	102.80mm
46.	17.5gm	103.00mm
47.	17.9gm	100.60mm
48.	18.0gm	102.60mm
49.	18.5gm	100.60mm
50.	19.4gm	100.60mm
51.	31gm	131.00mm

PCO 1881 PREFORMS

Neck Diameter 28MM

Sr. No.	Weight (GMS)	Total Length (MM)
52.	9.9gm	66.20mm
53.	10.9gm	66.20mm
54.	11.3gm	73.00mm
55.	11.4gm	70.13mm
56.	11.7gm	73.60mm
57.	12.0gm	72.20mm
58.	12.2gm	66.20mm
59.	12.4gm	73.00mm
60.	12.6gm	80.00mm
61.	13.0gm	73.60mm
62.	13.2gm	73.00mm
63.	14.15gm	80.00mm
64.	15.2gm	80.00mm
65.	15.2gm	100.00mm
66.	15.2gm	100.00mm
67.	15.2gm	130.00mm
68.	15.2gm	130.00mm
69.	15.2gm	130.00mm
70.	15.2gm	140.20mm

PET PREFORMS



PREFORMS DETAILS

PCO 1810 PERFORMS

Neck Diameter 27MM

Sr. No.	Weight (GMS)	Total Length (MM)
71.	17gm	81.90mm

26/22 SHORT NECK CSD GME 30.41

Neck Diameter 26/22MM

Sr. No.	Weight (GMS)	Total Length (MM)
72.	9.20	66.50mm
73.	9.90	66.60mm
74.	10.10	69.37mm
75.	10.80	69.37mm
76.	10.90	69.37mm
77.	14.00	76.37mm
78.	21.50	96.47mm

ROPP PREFORM

Sr. No.	Weight (GMS)	Neck Dia (MM)	Total Length (MM)
79.	9.5gm	25	70.5mm
80.	15.8gm	25	94.80mm
81.	18gm	27	95.50mm

32 MM NECK DAIRY PREFORM

Sr. No.	Weight (GMS)	Neck Dia (MM)	Total Length (MM)
82.	30	32	109.80mm

THIS 32 MM SCREW FINISH WITH TWO (2) THREAD

STARTS FOR STILL WATERS AND NON-CARBONATED BEVERAGES. THIS FINISH CAN BE USED FOR ASEPTIC FILLING AND FILLING WITH INTRODUCTION OF NITROGEN (THE INTERNAL PRESSURE SHOULD NOT EXCEED 1 BAR). THIS FINISH IS DESIGNED TO TAKE A TAMPER-EVIDENT PLASTIC CLOSURE ONLY

VARIOUS PREFORMS

Sr. No.	Weight (GMS)	Neck Dia (MM)	Neck Type	Total Length (MM)
83.	685	55	20 LTRS	418
84.	85gm	48	5 LTRS	180.5mm

WIDE MOUTH PREFORMS

Sr. No.	Weight (GMS)	Neck Dia (MM)
85.	57	120
86.	64	120

ALASKA 27 MM WATER CAP

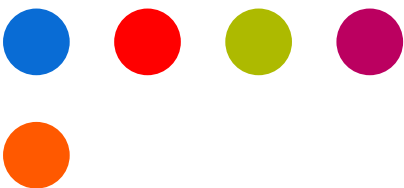


Specifications

- Closures (Compressor mould closures for water bottles)
- Made from SACMI machines 26/22 SHORT NECK (suitable for short neck size Pet Preform)
- Material – HDPE
- Weight – 1.2gm per Closure
- Packing – 9000 Piece



Available Colors



Benefits

Highest quality & finish
that gives your product
a premium image



SHORT NECK 26/22 WATER CAP



Specifications

- Closures (Compressor mould
- closures for water bottles)
- Made from SACMI machines
- 26/22 SHORT NECK (suitable
- for short neck size Pet Preform)
- Material – HDPE
- Weight – 1.2gm per Closure
- Packing – 9000 Piece

SHORT NECK 26/22 CSD/JUICE CAP (GME 30.41)



Specifications

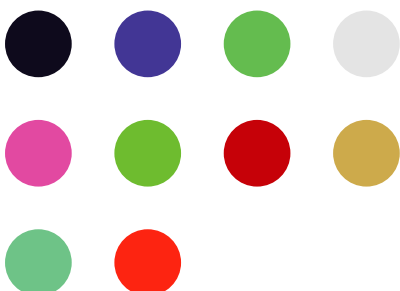
- Closures used for carbonate soft drink
- Made from HUSKY machines
- Material – HDPE.
- Available with ENGRAVED facility
- Packing-7000 Pieces/box
- weight:1.6gm



Benefits

- lighted closure in the industry with better performance.
- more saving of carbon footprint
- more resin polymer Saving
- more cost saving

Available Colors



Benefits

Best in class quality
coupled with great
service



28 MM CSD CAP 1881 WITH LINER

Specifications

- Closures used for carbonated
- soft drink
- Made from SACMI machines
- 28mm (1881 CLOSURE)
- (suitable for 28mm neck size Pet
- Preform),
- Material – PP .
- Available with printing facility
- Packing – 5500 Piece
- weight :2.65 gm

28 MM CSD CAP 1881 WITHOUT LINER (SINGLE PIECE)

Specifications

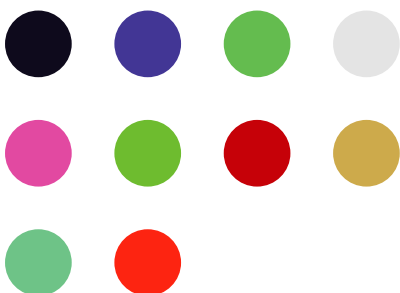
- Closures used for carbonated soft drink
- Made from SACMI machines
- 28mm (1881 CLOSURE)
- (suitable for 28mm neck size Pet Preform),
- Material – HDPE .
- Weight – 2.3gm
- Available with printing facility
- Packing – 6500 Piece



Benefits

- More saving of plastic carbon footprint

Available Colors



Benefits

Best in class quality
coupled with great
service



28 MM JUICE CAP 1881 (SINGLE PIECE)

Specifications

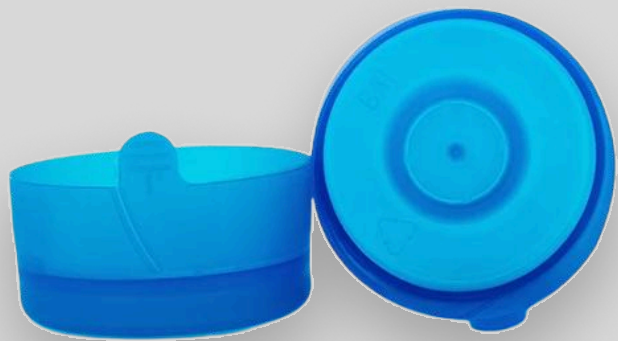
- Closure used for Juice (Warm Fill Beverage)
- made from SACMI Machine
- 28mm 1881 Closure
- (suitable for 28mm neck size Pet Preform),
- Material –HDPE.
- Weight – 1.9gm
- Available with printing facility
- Packing – 6500 Piece

20 LTR BOTTLE CAP (BT CAP)

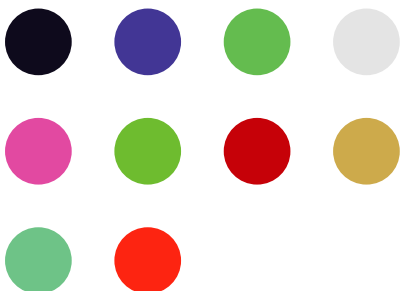


Specifications

- Bubble top caps for 20 ltr jar
- Full cap which provide complete seal
- Made from LDPE virgin material
- Easy to unlock
- Weight 3.5gm approx



Available Colors



Benefits

Best in class quality
coupled with great
service

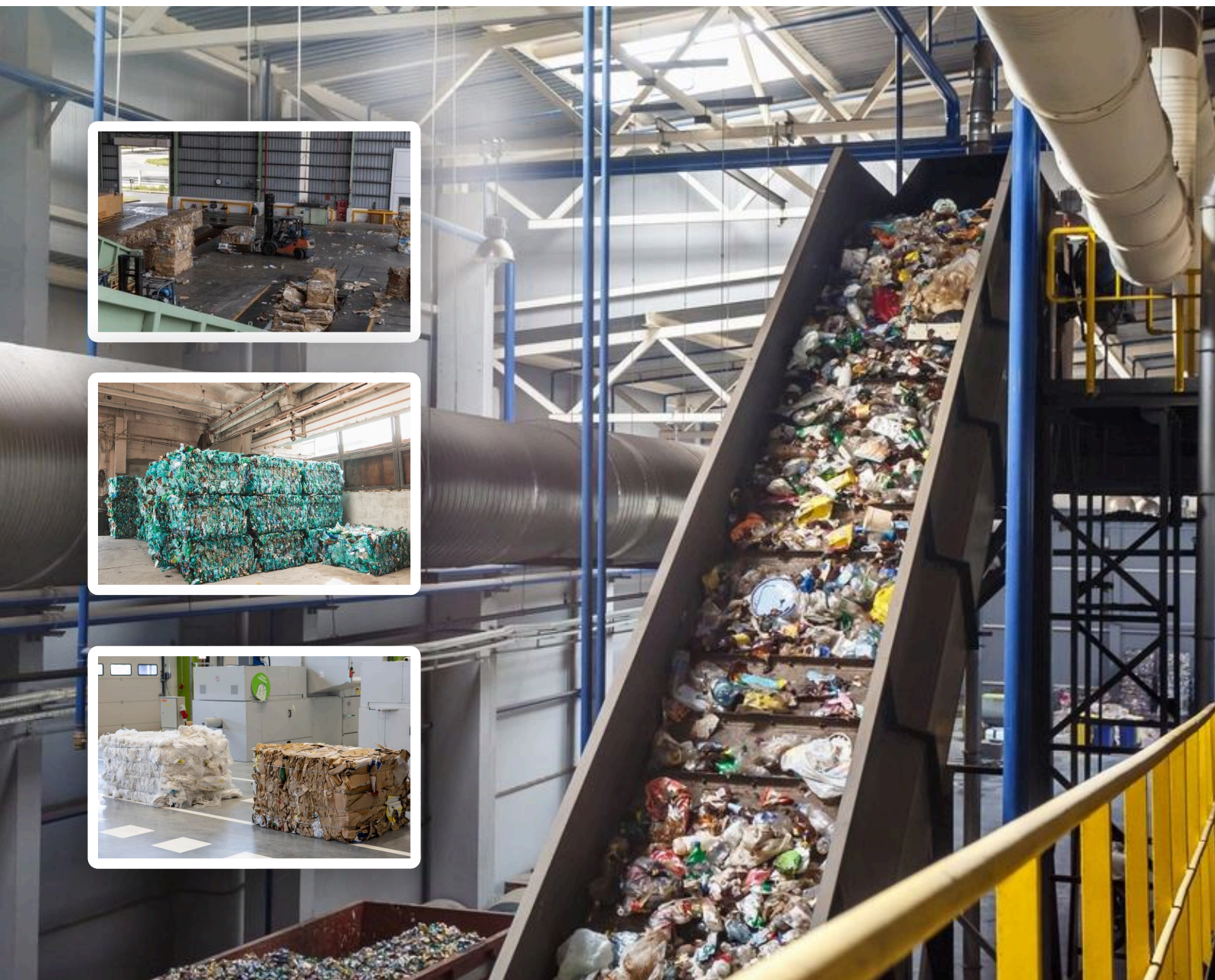
JAR

Specifications

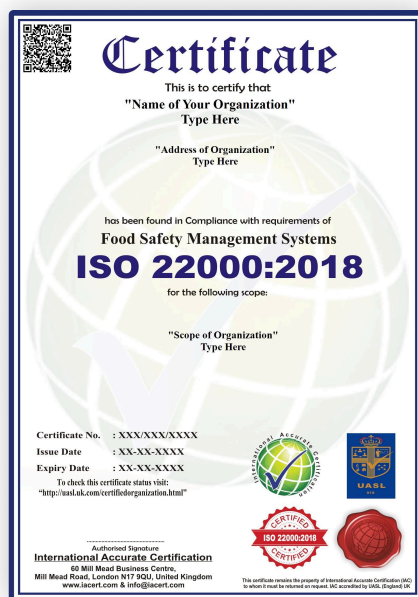
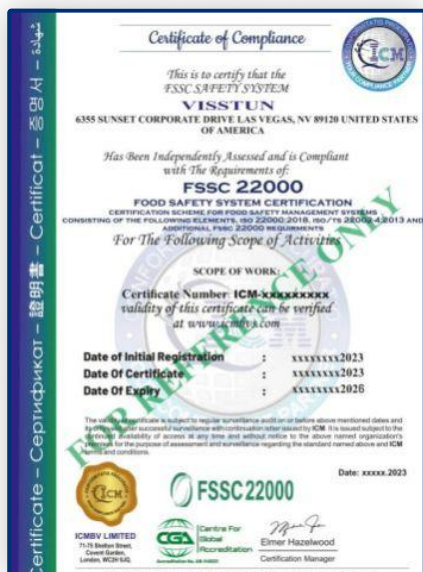
- Complete 20 ltr water capacity
- Weight 685gm & 710gm
- 5 ltr 46 mm neck 84gm jar and preform



Recycling Unit



Certified Excellence



SHRINK AND ADHESIVE FILM



SURFACE PROTECTION
FILM / MASKING FILM

LDPE SHRINK FILM

STRETCH HOOD FILM

STRETCH WRAP FILM

SHRINK FILM

LDPE TUBING
FILM ROLL

SHRINK HOOD FILM

PE MILK FILM

VCI-STRETCH WRAP
FILM

SILAGE WRAP FILM

Our Clients



Customers & Market Reach

- Trusted by leading brands: Reliance Retail, Tata Group, CANPACK, JSW, PATANJALI, Bauli, chitale, Urja, Big Cola, DAVAT, CLEAR WATER, CLOUD9, and more.
- Strong supply network across India with pan-India logistics.
- Ready to meet international market demands with export capabilities.



CONTACT US

 +91 9028020745 | +91 9421402232

 Bai-kakaji Polymers Limited Plot No.
M3 & M4 M.I.D.C., Latur - 413531